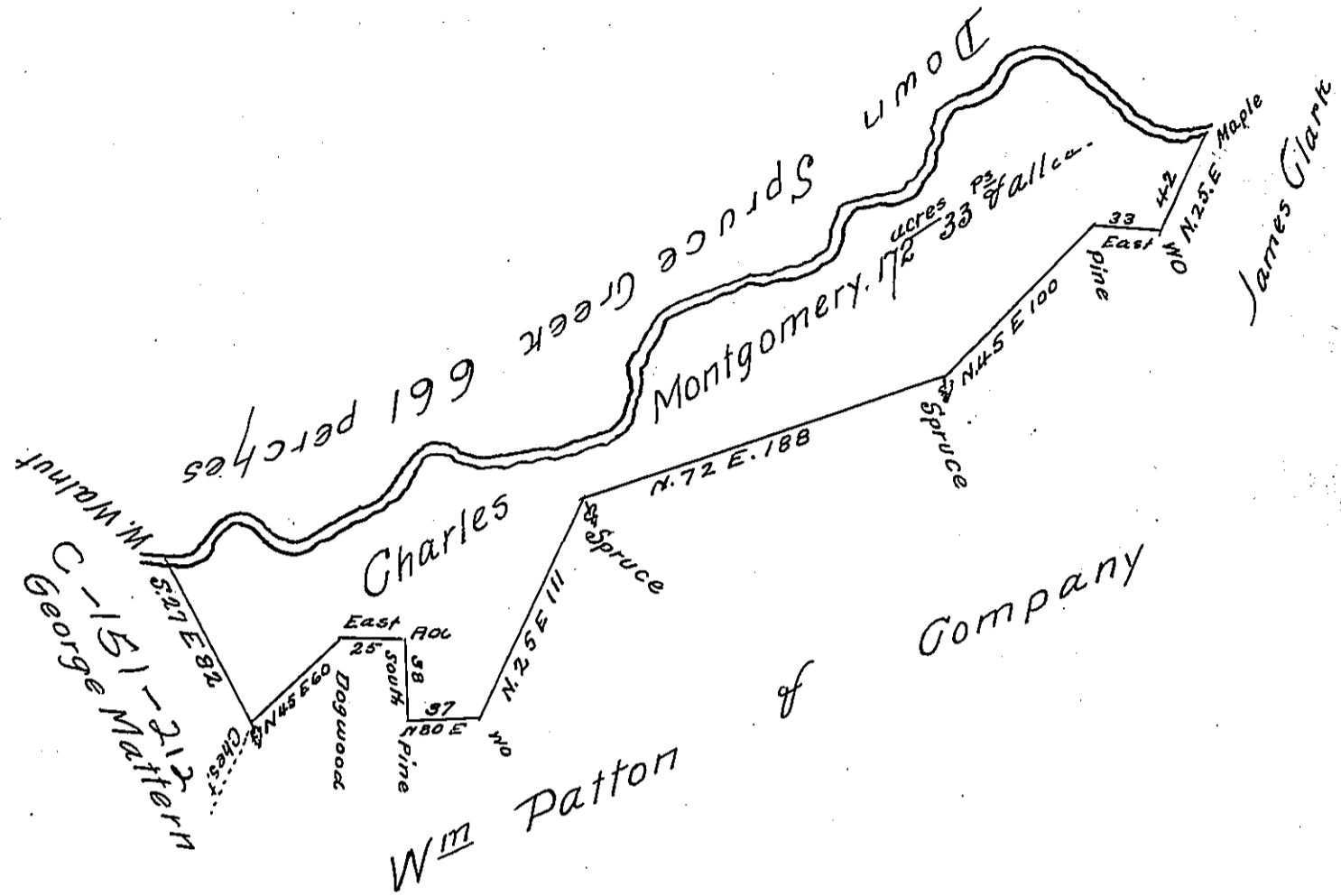


Courses & Dist.
down the Green
from the Maple
to a W. Walnut

- S 84 W 23
- N 45 W 60
- S 60 W 50
- S 29 W 50
- S 82 W 29
- S 4 W 26
- S 64 W 37
- S 23 W 74
- West 107
- South 18
- S 60 W 65
- N 80 W 70
- S 10 W 26
- N 86 W 26

661



Situate in Franklin township Huntingdon County containing
One hundred and Seventy two acres 33 perches and allow-
ance. Surveyed the 15th day of August 1806 on a Warrant
granted to Charles Montgomery dated October 16th 1792

J^{no} Morrison D.S.

Andrew Porter Esq
Surveyor General.

Note - The above Survey was made by James Hunter Esq
who was a Deputy to Col. Ganam but was never handed
to me until after I had surveyed and returned a greater
part of the land on Warrants granted to Benjamin Dav-
idson and John Glominger Esqs of a later date than Mr. Mont-
gomerys.
J. Morrison D.S.

IN TESTIMONY that the above is a copy of the original remaining on file in
the Department of Internal Affairs of Pennsylvania, made
conformably to an Act of Assembly approved the 16th day of
February, 1833, I have hereunto set my Hand and caused
the Seal of said Department to be affixed at Harrisburg,
this thirteenth day of February 1906

Hoac R. Brown
Secretary of Internal Affairs.